

Supporting our Disadvantaged Pupils

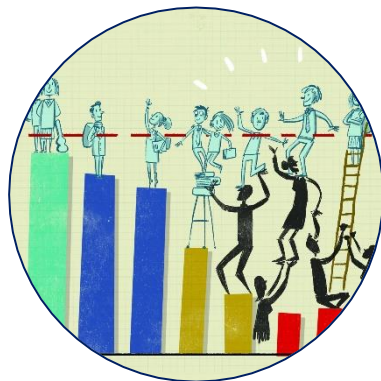


We know there is a difference in attainment and progress for disadvantaged pupils when compared with pupils nationally. The school's assessment information shows this is particularly noticeable in Year 1, in reading, writing and mathematics. Some of these pupils also have special educational needs (SEN).

At St Aloysius, pupils consistently achieve as well as they can and are given excellent support. We use pupil premium funding and special educational needs funding effectively to put interventions in place. We carefully track the individual attainment and progress of disadvantaged pupils. Early identification of gaps and intervention is one of our key strengths and plans are in place to further strengthen this provision. Engagement of vulnerable families is particularly strong and effective projects have been implemented this term to extend the provision beyond the adult to the adult and child working together, through events such as our Family Hub workshops, Stay and Play sessions and Curriculum Cafes.

We track our children using a behaviour and vulnerability profiling tool which is used to create bespoke support, pinpointing specific areas of intervention to ensure that our disadvantaged children receive first rate support, enabling them to thrive at our school. Areas of focus are:

- Behaviour
- Social Development
- Emotional Development
- Attendance
- Attainment
- SEN (including disabilities)
- Mobility
- Family circumstances
- Home/school partnership
- Any other factors that may impact the child



Our disadvantaged children are tracked and monitored very carefully.

- An individual action plan is written by the class teacher for each of our disadvantaged pupils.
- Pupil progress meetings throughout the year determines tailored and timely interventions to be put in place, closing any gaps in learning quickly.
- All staff are very proactive and know their children well. Additional daily support is offered as appropriate.
- A mentoring system is well established in KS1, targeting many of our disadvantaged children.
- An exciting and vibrant curriculum is established to provide all children, but particularly the disadvantaged children, with real life experiences that will directly impact upon their learning.

We ensure that our disadvantaged children have opportunities to attend extra-curricular clubs to enrich their school experience.

- Close partnership with parents is seen as vital. Many of our parents have been supported with improving attendance and punctuality. A small number of parents still require this ongoing support.
- Early Help meetings are held when needed for our disadvantaged children.